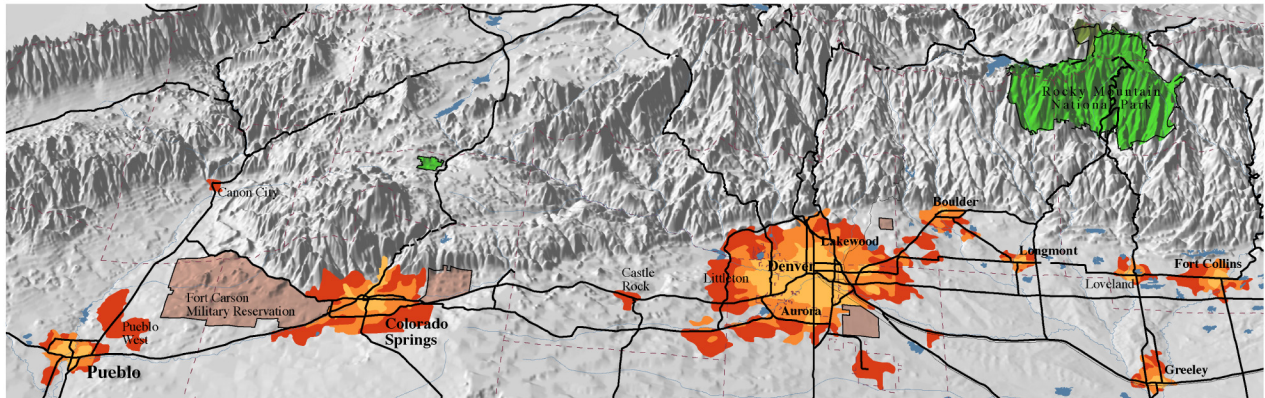


DIGITAL CARTOGRAPHY for NATIONAL PUBLICATIONS

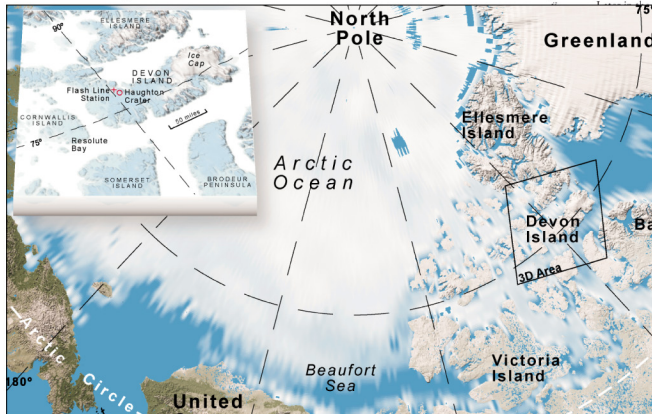


National Geographic, November 1996

For high quality, “user-friendly” images, several national high-profile publications have chosen Computer Terrain Mapping. What makes CTM’s mapping and imagery services so unique is our high resolution 3-dimensional rendering software, our ability to deal with a variety of uncommon data sources and unusual projections and the capability to texture map virtually any image or thematic map.

We’ve built our reputation on the quality of our imagery and our flexibility to meet the unusual demands of matching map to story.

Men’s Journal, October 2000



National Geographic Adventure, Winter 2000

VAIL

[colorado]

1 Minturn, a frowsy railroad town on Vail’s back side. When you hit the rail yard, walk south to the Saloon, a favorite local dive where margaritas and tall tales begin flowing at about four—or continue on to the Cougar Ridge Cafe, where you can catch a two-dollar country bus back to Vail.

At the far eastern edge of the resort, another procession of locals trek toward Mushroom Bowl and the East Vail Chutes (map at left), a truly extreme backcountry haven filled with radical chutes (some with cliffs and rocks) that spill nearly 3,000 vertical feet down into East Vail. Although there’s no commercial guiding service, first-timers should *under no circumstances* go without a knowledgeable local to show the way, as the potential for disastrous wrong turns is omnipresent. It’s best to check with the Vail Ski Patrol or to hook up with experts like Chris Anthony, Vail’s official ski ambassador, who leads skiing workshops at Vail and in Alaska.

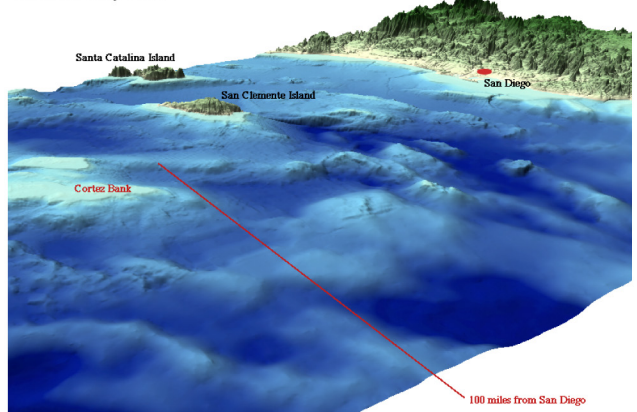
Resort Information: 800-525-2257, www.snow.com. **Guide Services:** 970-843-9082, www.chrisanthony.com. **Avalanche Information:** 970-479-4652, www.caic.state.co.us. **Where to Stay:** Minturn Inn, 800-646-8876, www.minturninn.com (\$79 per night and up). **Where to Eat:** Lunch at Cougar Ridge Cafe, 970-827-5609; dinner at the Saloon (near the Eagle River Inn), 970-827-3954.

2 You might think that—with its 4,600 in-bounds acres—there would be little reason to venture beyond Vail’s boundaries. But in addition to being the nation’s biggest ski resort, it’s also one of the busiest, so it’s not uncommon for Vail’s (too) well-publicized powder runs to be tracked out well before lunchtime. That’s about when small bands of locals begin hiking toward the resort’s far eastern boundaries to catch first tracks down the Mushroom Bowl and East Vail Chutes. By skiers head for the Minturn Mile (map at right), which minute hike from the top of Vail’s Game Creek lift to the crest (e. If it’s too rocky at the top of the ridge, just ski right for the backcountry gate to the next entrance.) From there, it down the moderate, 20-degree fall line, which descends feet into a sublime, gladed drainage that funnels into Game Creek pick up the creek-side trail, where easily followed tracks are by 1 p.m. or so. The trail follows the creek bed all the way to

As described remains only, consult other sources for more detail.

National Geographic Adventure, Winter 1999

Outside, May 2000



Computer Terrain Mapping, Inc