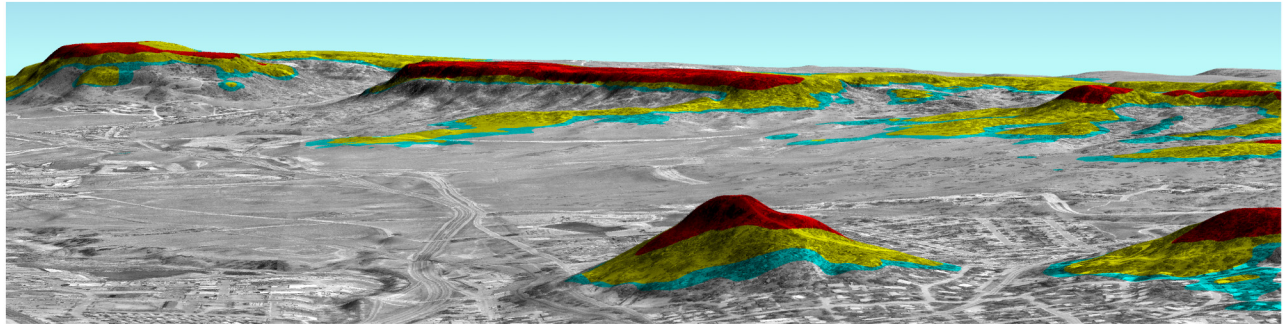


CASTLE ROCK RIDGELINE / SKYLINE PROTECTION REGULATIONS STUDY

Douglas County, Colorado



Regulation of land use, while sometimes contentious, can be an important tool for preserving the scenic character of an area. Visual impact of development is always near the top of the list of complaints regarding rapid growth and urban sprawl. Skyline and ridgeline regions are particularly sensitive from a visual standpoint.

The Town of Castle Rock, Colorado recognized that their special scenic character was being lost to ridgeline development. CTM, ERO, and Clarion Associates teamed up to provide an innovative solution for the Town. These images illustrate the specialized mapping that provided the foundation for an overlay zoning district that restricts development in critical ridgeline areas.

